

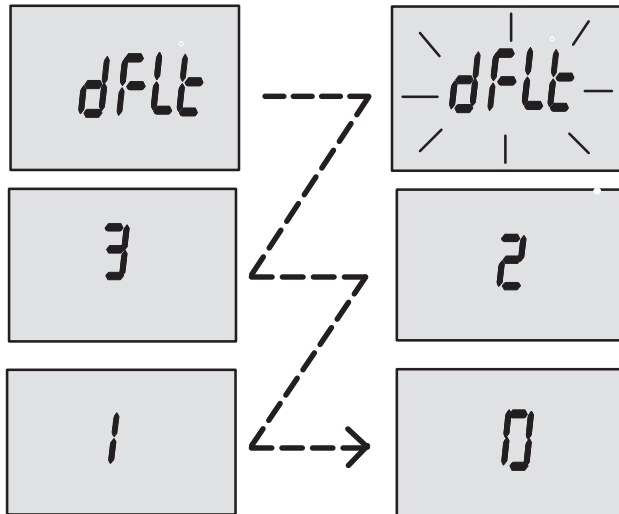


Master Reset

You can return the gauge back to factory presets through the Master Reset command.

IMPORTANT: Performing a master reset will reset the unit back to all factory defaults, thus eliminating any installation calibrations performed during set up of product.

1. Hold in **MODE** and  for approximately 12 seconds. You will see the word “dFLt” let go of the buttons.
2. Immediately press and hold in **MODE** and  again until the unit counts down to zero “0”.
3. The “**Set**” message flashing on the screen indicates that the unit has been reset to factory defaults.



Standard Information Display Screens

NOTE: This manual shows all the Monitor display screens that are available. Depending on your type of engine, not all these screens will apply.



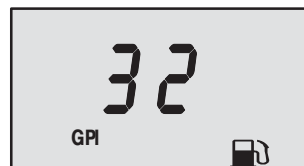
SoftwPle NeVion



Engine HouVa


Start Up

At start up, a momentary (1 second) screen displays the current monitor software version, followed by a 4 second display showing hours of engine use.



Fuel Used

Displays approximate fuel used since the last reset. **Reset** will return display back to 0.

You can **Reset** anytime by pressing and **MODE**  buttons together momentarily.