

## 6BTA 5.9 & 6CTA 8.3 Mechanical Engine Wiring Diagrams

**Wiring Diagram (B Series)**  
Page D-16

**Section D - System Diagrams**  
B and C Series

### Wiring Diagram - Standard (B/C Series)

#### FOR SINGLE STATION SYSTEM

WATER TEMP.  
SENDER  
P/N 3913628

F	OHMS
105	287.4
180	64.5
210	39.7

OIL PRESS.  
SENDER  
P/N 3913627

PSI	OHMS
0	10
60	90.5
150	187

#### FOR DUAL STATION SYSTEM

WATER TEMP.  
SENDER  
P/N 3914081

F	OHMS
100	144
150	55
200	23
250	11

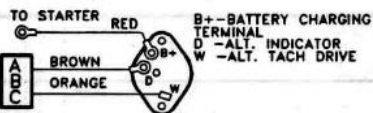
OIL PRESS.  
SENDER  
P/N 3913616

PSI	OHMS
0	5
60	45
150	93

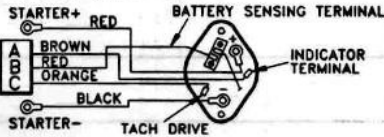
**Sender Specs**

#### ALTERNATOR OPTIONS

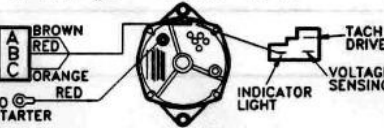
##### OPTION #1 - BOSCH K1



##### OPTION #2 - CAV

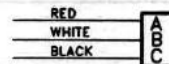


##### OPTION #3 - DELCO 15 SI

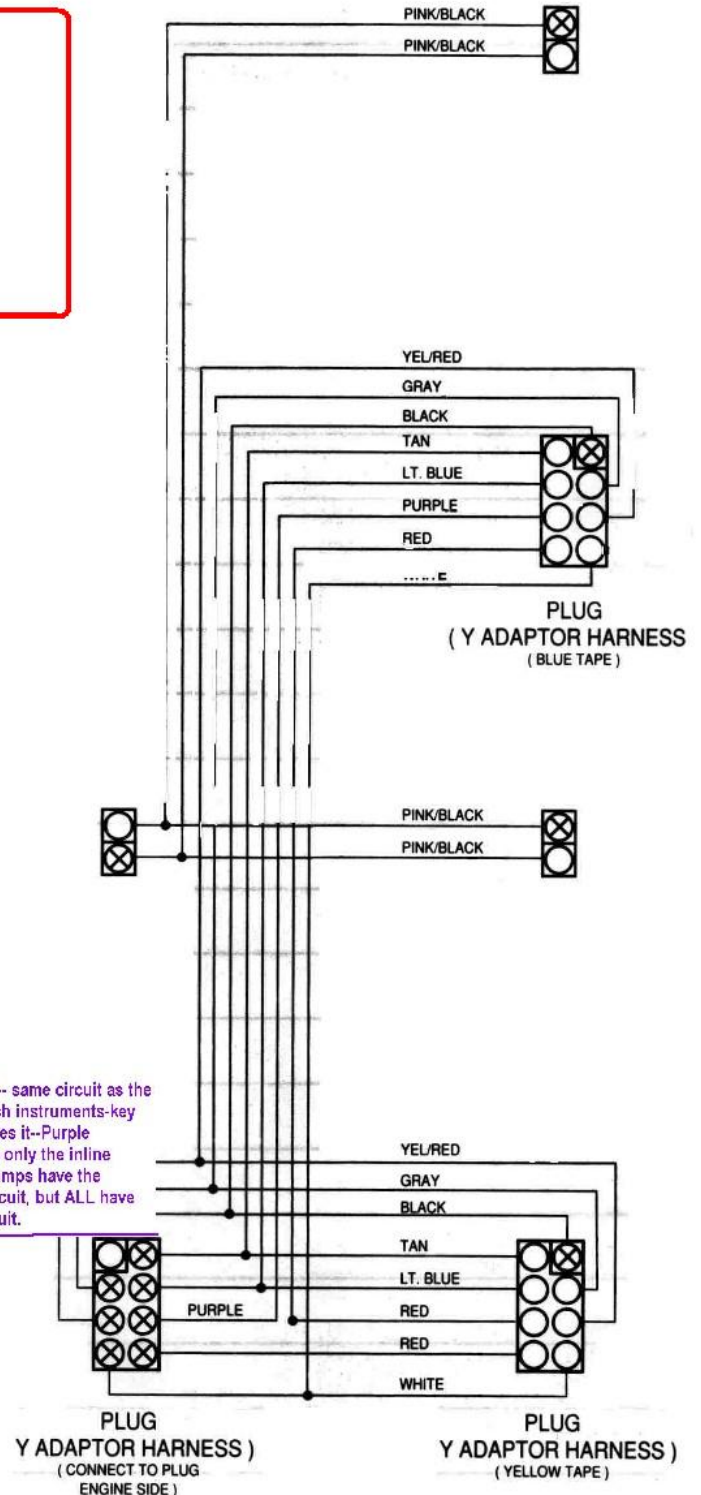
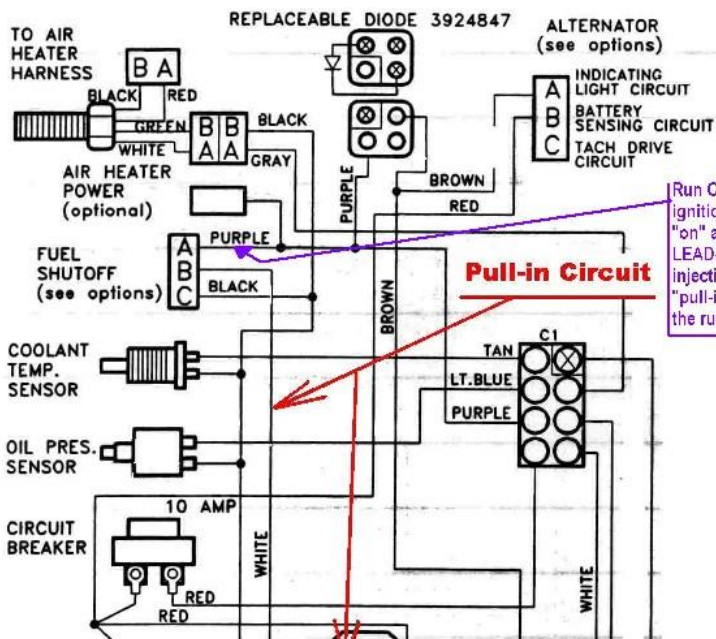
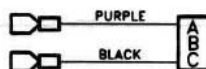


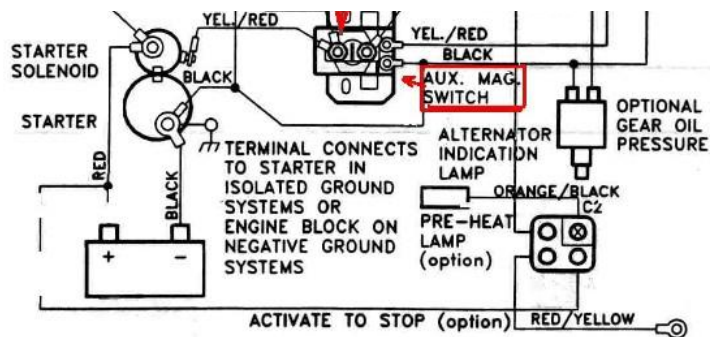
#### FUEL SHUTOFF OPTIONS

##### OPTION #1 - BOSCH & NIPPONDENSO INLINE TYPE PUMPS

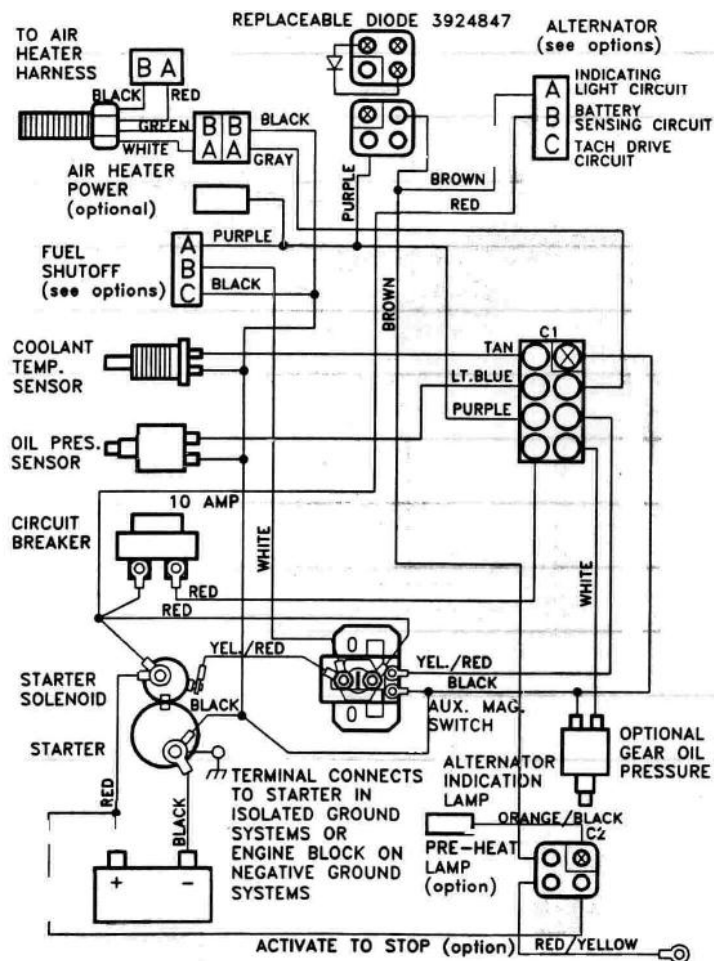


##### OPTION #2 - CAV & BOSCH ROTARY TYPE PUMPS





**Y ADAPTOR HARNESS**  
(USE WITH DUAL STATION SYSTEM)



►Mechanical Engine Wiring, Wiring, Wiring Diagram

## What We Do



Seaboard Marine delivers "Guaranteed Better Than Factory" Performance, Parts, Design, and Engineering for Cummins and other Marine Diesel applications. We've been serving local Ventura County, California since 1980 as a custom boat builder, repower specialist, designer, and

## Connect with Us

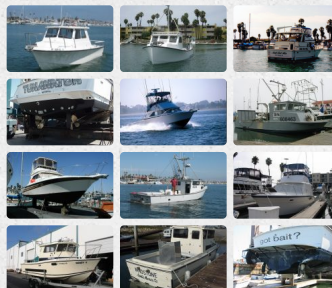
- ✉ Contact Us
- ☎ Phone & Email Consultation

## Social



## Contact Us

## Repower Projects



## Featured Articles



"Marine Age" the REAL age of a Marine Diesel Engine



Propellers Move Boats, Engines Just Turn Them



Everything you Need to Know About Marine Exhaust Systems

Continuous Duty – A Different

supplier of equipment to builders,  
commercial fishermen, and recreational  
users.

See our **611** reviews on  Trustpilot



 Seaboard Marine Inc.  
📍 2947 W 5th Street  
Oxnard CA 93030  
✉ info@sbmar.com



Perspective



Understanding Low  
Power Troubleshooting

[Contact Us](#) [Seaboard Policies](#) [Phone & Email Consultation](#)

© 1980 - 2021 Seaboard Marine - All Rights Reserved