

390DA

Salon Skylight Panel Removal

Tools Needed

1. Putty Knife
2. Phillips screw driver/cordless screw gun

Materials List

1. 390DA 05,panel, sns hd sliding cherry **P/N- 1779619**
2. 390DA 05, panel,sns hd sliding maple **P/N- 1779620**
3. Pull, door flush MT handle nickel **P/N- 1756296**
4. Catch, grabber latch W/10LB hold blk plas **P/N- 390849**
5. SLIDE, HDPE SALON SOFA 1"X 16" **P/N- 894030**
6. TRACK, ALUM SLIDER 36.5" **P/N- 1181668**

390DA

Salon Skylight Panel Removal

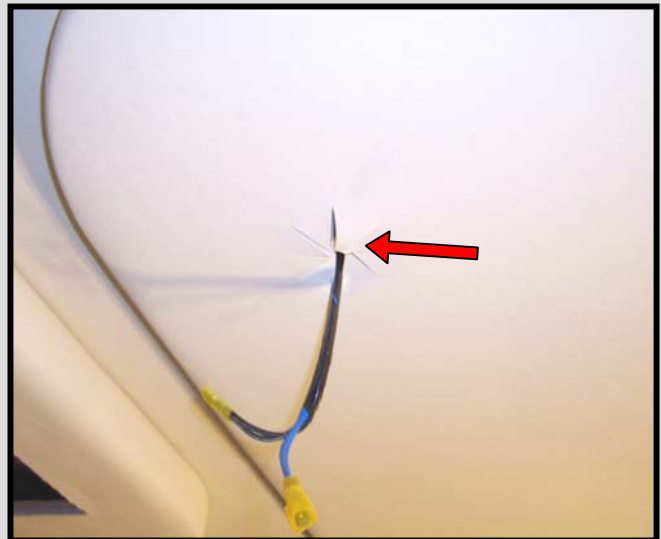
Figure 1.1



Step 1

The skylight panel is secured to the ceiling along the outer edges using the screw and tuck method and from inside of the light cutouts in the ceiling. The lights are held in place with spring clips on the lights, remove both lights by pulling down and out of panel then unplug wires (Figure 1.1). With lights removed gently pull back on the vinyl at the light holes then locate and remove screws (Figure 1.2).

Figure 1.2



390DA

Salon Skylight Panel Removal

Step 2

Locate around the outer edges of the panel where the vinyl has been tucked in place to hide the securing screws (Figure 1.3).

Step 3

With the vinyl loose carefully pull back on vinyl to expose securing screw then remove screws from around panel releasing the skylight panel from ceiling (Figure 1.4).

Note:

In some cases the skylight panel will not have a securing screw on the aft edge that is screwed and tucked, the only screws securing the panel on the aft side will be the screws located inside the two light hole cutouts.

Figure 1.3

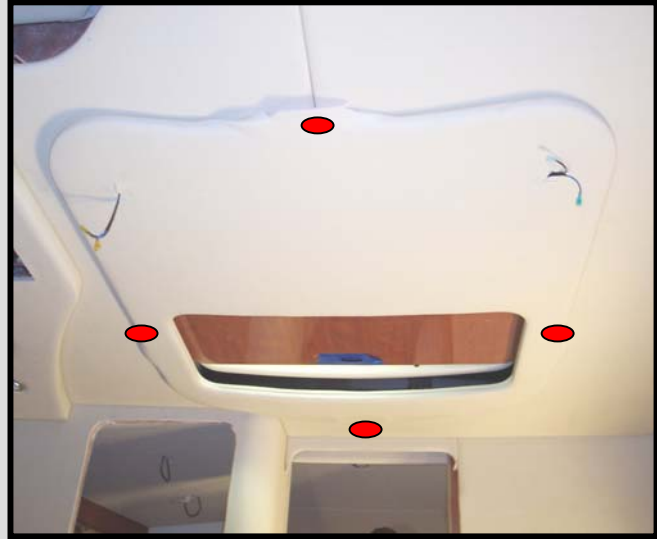
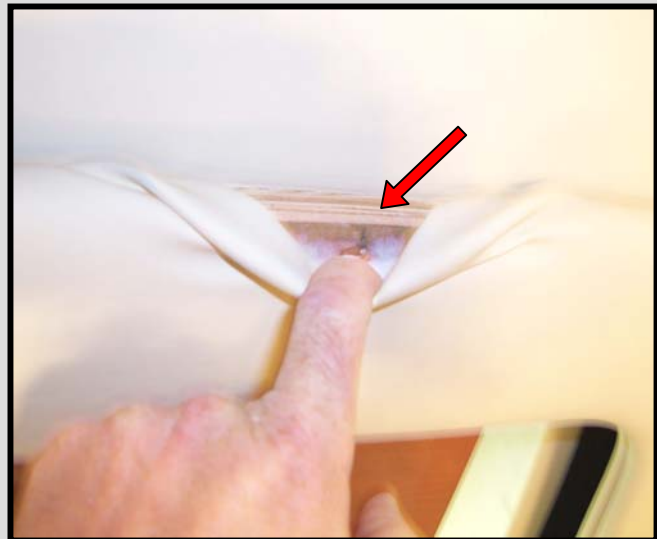


Figure 1.4



390DA

Salon Skylight Panel Removal

Figure 1.5

Step 4

With the skylight ceiling panel removed slide the skylight slider panel aft to access track screws then remove the exposed screws in track then slide panel forward to access the remaining track screws and remove, the panel can now be removed (Figure 1.5).



To install reverse process.

Note:

See next page for slider panel prints.

Step 5

Clean work area.

390DA

Salon Skylight Panel Removal

