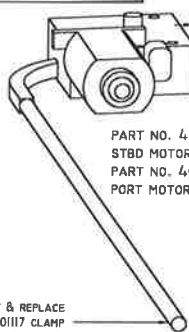


USE 36" PC OF #41100400 TUBE
 SPRAY EACH END W/ #40700155 WHITE LITHIUM GREASE
 CUT 1" SLIT ON ONE END OF TUBE AND SLIP OVER
 MOTOR UNIT TUBE, ALIGNING SLIT W/ SLIT IN MOTOR UNIT
 USE #40401117 CLAMP TO SECURE. DO NOT OVER TIGHTEN!!



PART NO. 40400561
 STBD MOTOR ASSEMBLY SHOWN
 PART NO. 40400562
 PORT MOTOR ASSEMBLY OPPOSITE

REMOVE VINYL TUBE AND CLAMP FROM MOTOR UNIT & REPLACE
 W/ #41100400 POLYETHYLENE TUBE USING #40401117 CLAMP
 SEE FIG. 1

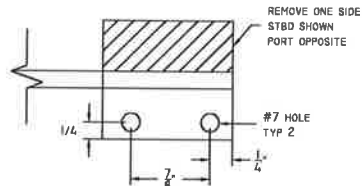
NOTES:

1. PRESS BEND 300" R MOTOR SHAFT COVER, AFTER CUTTING SHAFT FROM MOTOR
 CHECK WITH A 300" RADIUS CARD
2. REMOVE VINYL TUBE AND CLAMP FROM MOTOR UNIT & REPLACE W/ #41100400 POLYETHYLENE TUBE USING #40401117 CLAMP

41-3/32 APPROX LENGTH
 AFTER CUTTING OFF MOTOR

3/16"

CUT
 LINE



REMOVE ONE SIDE
 STBD SHOWN
 PORT OPPOSITE

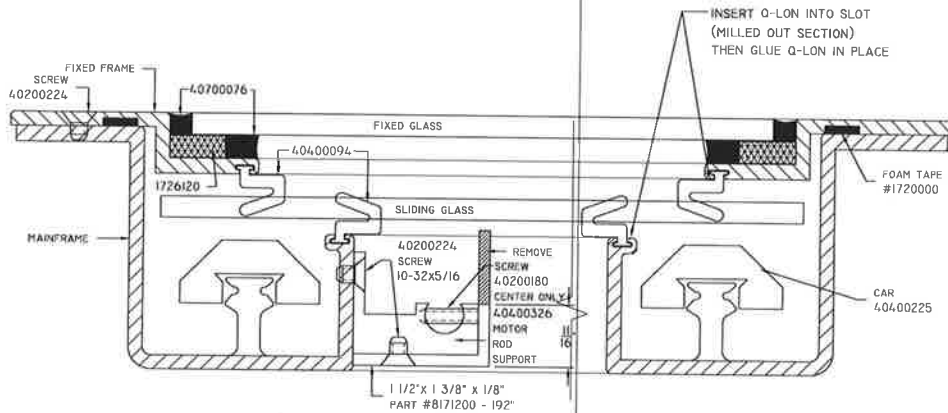
#7 HOLE
 TYP 2

1/4"

7/8"

1/4"

Taylor Made SYSTEMS New York, Inc.	BOAT SEA RAY 430A POWER ROOF WINDOW		
	RECEPTION MOTOR ASSEMBLY		
Product (S B) 773-0638 Fax (S B) 773-0620	BY RAJ	DATE 02/01/08	CODE 703-1030061/62



PORT-STBD SECTION
FULL SCALE

 Taylor Made SYSTEMS New York, Inc. Phone: (212) 713-5636 Fax: (212) 725-2625	REV:	SEA RAY 43DA POWER ROOF WINDOW
	DESCRIPTION:	PORT-STBD SECTION
	BY:	DATE:
	RAF	09/28/07 703-1030061/62

